

Compact **Sub Station**



COMPARTMENTALIZATION

- HT Breaker Chamber
- Transformer Chamber
- LT Distribution Board Chamber

CONCEPT



HT Line



HT Breaker



HT Transformer



LT Board

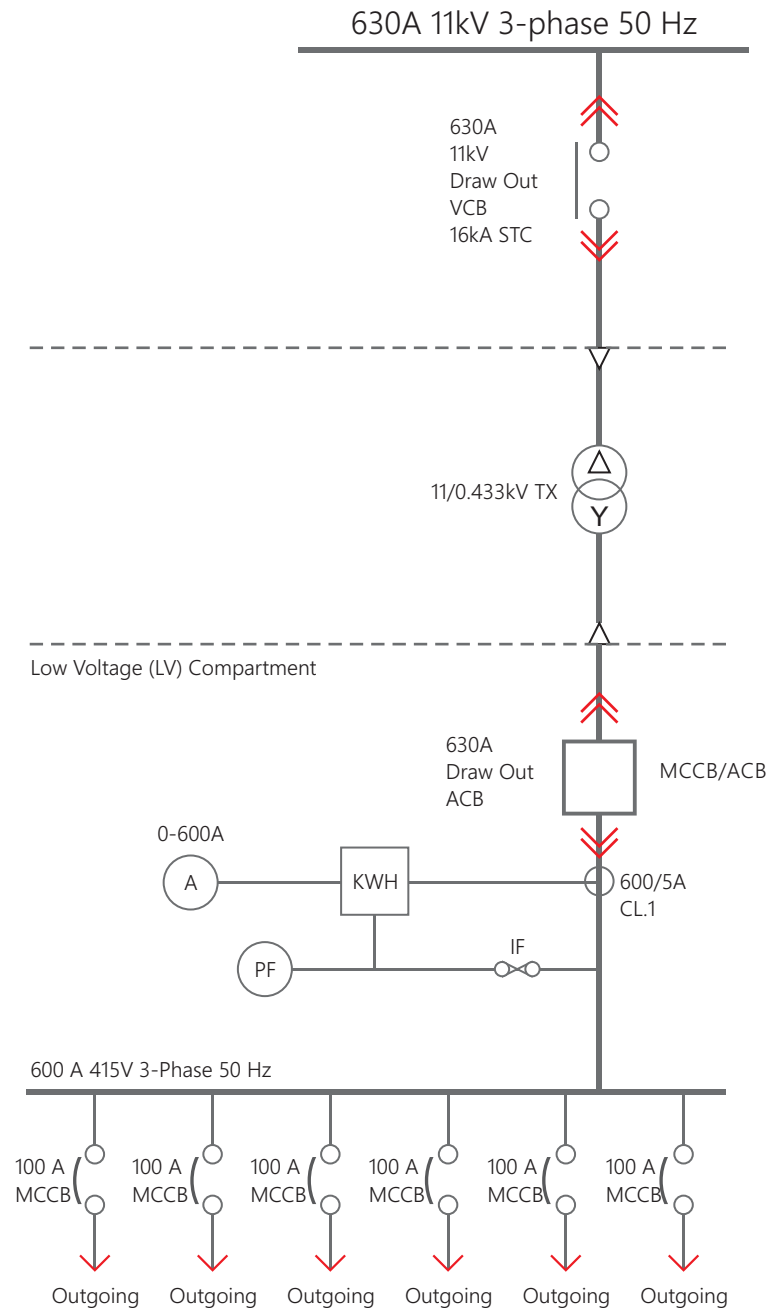


LT Distribution

Compact Sub Station



TYPICAL SLD W/O PROTECTION



HT
BREAKER
CHAMBER

TRANSFORMER
CHAMBER

LT
DISTRIBUTION
BOARD
CHAMBER

We Design &
Manufacture



Structure
Wall
Roofs
Doors
HT Breaker
Transformer
LT Distribution

Transformer
Protection

HT & LV
Metering

LV
Distribution

INTRODUCTION

- Installation where space is premium like Complexes, Airports, Malls, Industries etc.
- Designed to withstand surrounding temperature, humidity & condensation, rain, solar radiation.
- Designed keeping in mind the Dielectric & Thermal isolation.
- Indigenously designed & tested for fast & easy installations.
- High life expectancy under normal operating conditions.
- Maintenance free.

DESIGN & STRUCTURE

Every unit is factory-tested and contains the following:

- CRCA / GI metal enclosure with compartments.
- 11kV/12kV/ VCB for connection to the 11kV/12kV network and also the protection circuits for the (HV/LV) transformers.
- Hermitically sealed transformer .
- LV switchboard with required rating.
- HV/LV Terminals.
- Appropriate Ventilations.
- 4 point locking doors.
- Walkway (optional).
- Insulated Busbars.

CUSTOMIZED DESIGN

Our Compact Substation can be designed and customized to different sizes and configurations to fulfill the customer's requirements.



INTERNAL ARRANGEMENT

Inside our compact substation's enclosure, there are 3 separate compartments for safety purposes.

Access to HT - Separate door

Access to LT - Separate door

Access to Transformer - Separate door

The arrangements within are as follows:

- A compartment for the HT Breaker & Protection Circuits.
- A compartment for the Distribution Transformer.
- A compartment for the low voltage (LV) distribution board

The protection degree between each compartment is IP3X.

COMPARTMENTS

HT BREAKER

- *The HT Breaker is a type-tested, metal enclosed, VCB switchgear.*
- *Transformer protection.*
- *High degree of personnel safety*
- *High degree of reliability*
- *Maintenance-free*
- *Operation not affected by environmental effect*
- *Compact & small in size*
- *Conforms to IS standards*
- *Equipped with shunt release & auxiliary switch for remote operation and indication*

DISTRIBUTION TRANSFORMER

- *Epoxy Insulated Dry Type*
- *Connected with insulated busbar with H.T. breaker and L.T. distribution board*

LV DISTRIBUTION BOARD

The LV panel is equipped with Incoming Switchgear, copper / Aluminum bus bars, outgoing MCCB's and instrument panel for metering, indication and site work's auxiliary supply.

MAIN TECHNICAL PARAMETER

	Items	Unit	Data
System HV unit	Rated voltage	kV	7.2 / 12
	Rated frequency	Hz	50
	Rated power frequency withstand voltage (1 min)	phase kV	35
	Rated lighting impulse withstand voltage	To earth, between phase kV	75
	Rated current	Main circuit A	630
	Virtual value of rated short time withstand current (3s)	kA	16
	Rated peak value withstand current	kA	40
	Rated break current	kA	16
LV unit	Rated voltage	V	440
	Rated current	A	600
	Virtual value of rated short time withstand current-secs (1/3)	kA	25 / 50
Transformer unit	Rated capacity	KVA	250-1000 KVA
	Voltage H.T.	kV	11
	Voltage L.T.	V	440
	Rated off Load Tap	%	+/-2.5% & +/- 5%
	Vector Group		Dy11



Our Product Range

- | | | | |
|---|---|--|---|
| <ul style="list-style-type: none"> • Shelter • Mosaic Desk • Console Desk • Bare Panel IP-65 • PLC Panel • Mosaic Minic Panel • Local Control Station • FRP Box | <ul style="list-style-type: none"> • LIE - LIR • Power Distribution Box • Purge & Ex-proof • Acrylic Mimic • NG / LAVT Cubicle • Generator Control Panel • MCC / PCC • CT Box | <ul style="list-style-type: none"> • Synchronization Panel • HT Panel • Large Video Screen • Networking Panel • Bare Panel IP-55 • Junction Box • Control & Relay Panels • Alcosy Control Desk | <ul style="list-style-type: none"> • Metering Panel • Metering Box • Marshalling Panels • EMI/RFI Compliant Panel • Universal Test Bench • Push Button Station • 19" Racks • Control Room Interiors |
|---|---|--|---|



PYROTECH ELECTRONICS PVT. LTD. - UNIT II



SOLAR PLANT



PYROTECH ELECTRONICS PVT. LTD. - UNIT IV

Pyrotech Electronics Pvt. Ltd was established in 1976 at Udaipur, Rajasthan having more than 35 years experience in Turnkey control room interiors, Mosaic Panels & Desks, Control Panels & Desks, other Industrial Panels, Junction Boxes & Racks and more than 10 years experience of Supply, Installation & Commissioning in video wall market. We have our reach to the Power , Energy G/D/T, Oil & Gas, Metal, Transport, Defense & Cement industries etc. .



An ISO 9001, EMS 14001, OHSAS 18001 Company

PYROTECH ELECTRONICS PVT. LTD. - UNIT II

E-329, Road No. 12,
Mewar Industrial Area, Udaipur - 313 003,
Ph: +91-294-2492122/31/34, Fax: 2492130,
E-mail: pyrotech@pyrotechindia.com,
marketing@pyrotechindia.com

C-140, Sector 63,
Noida-201301 (Uttar Pradesh),
Mobile : +91-88004 88792,
E-mail : pmppl@pyrotechindia.com,
electricals@pyrotechindia.com

Regional Marketing Offices :-

- | | | |
|-------------|-------------|-----------|
| • Ahmedabad | • Bhopal | • Kolkata |
| • Baroda | • Delhi | • Mumbai |
| • Bangalore | • Hyderabad | • Chennai |